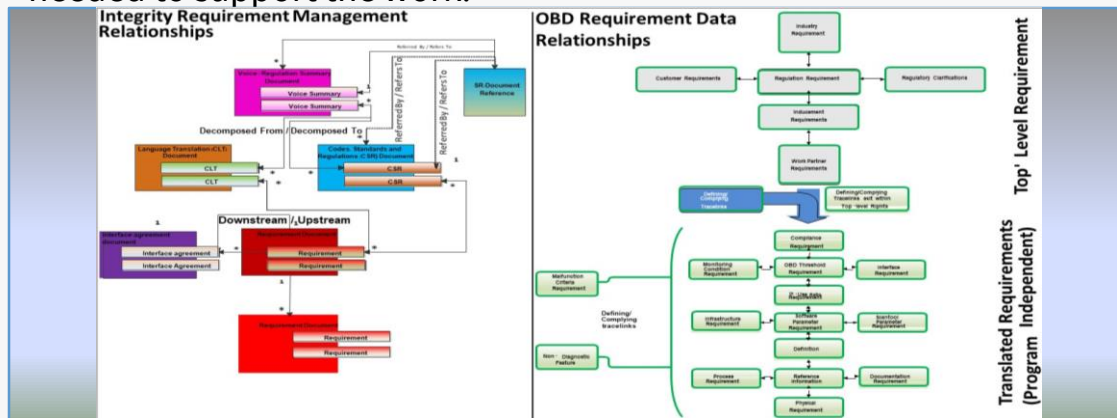


OBD Requirements Migration

Project Basics

Teamcenter Systems Engineering (TcSE) had been the tool of choice for storage and work management for On-Board Diagnostic Requirements. In an effort to utilize a system engineering tool common across the business, OBD requirements and work management were migrated to the Integrity tool.

A team was created which included 1 SME and 1 project manager both of which shared project duties. Additional resources were brought in as needed to support the work.



Tools

Teamcenter Systems Engineering (TcSE), PTC Integrity, MS Excel

- Data architecture constructed in Integrity
- 10,000 requirements migrated from TcSE to Integrity
- 25,000 trachelinks migrated

Problem

Requirements are stored in multiple SE tools across businesses. This does not allow for requirements to be shared or allocated across the business. In addition, the OBD data existed in a tool which was to be decommissioned.

Solution

Created data model and architecture for the OBD requirements schema in Integrity. Mapped TcSE data and trachelinks to Integrity. Completed gap analysis and specified tool development to support work management and processes. Imported and verified data.

Benefits

- Harmonization of data across business
- Allows requirement flow down and traceability from source to end user
- Cost savings by the decommissioning of TcSE, a redundant tool